

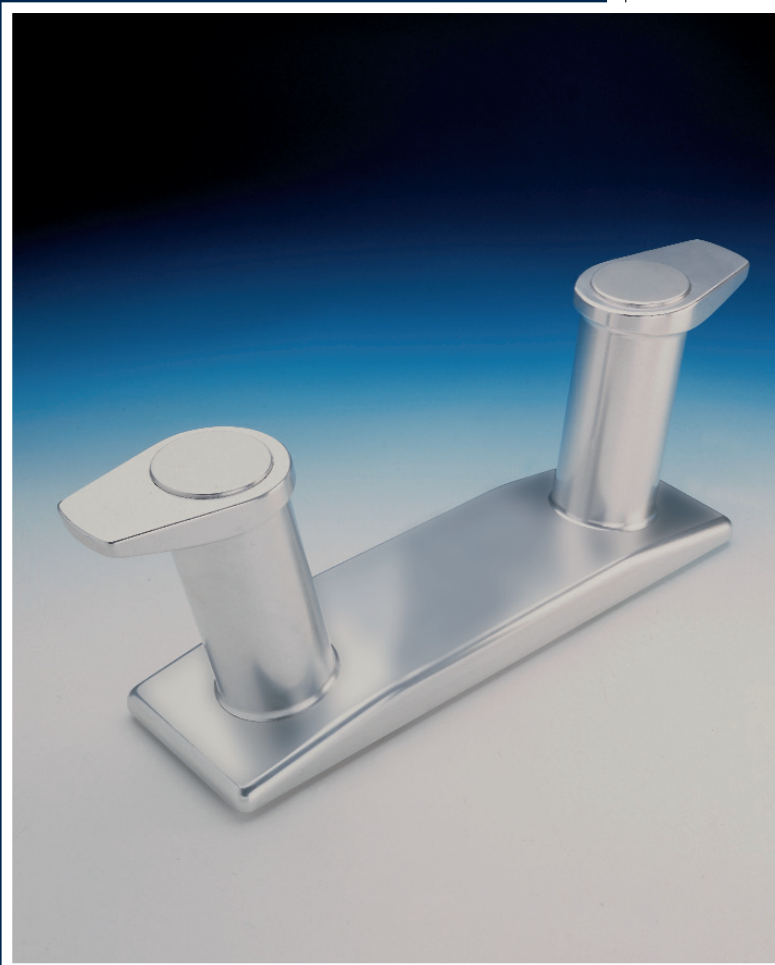


BITTA

A DUE COLONNE
INCLINATE

art.

0253-AN
0254-AN



LEGA
DI ALLUMINIO
ANODIZZATO
LAVORATO
DA BARRA
E LASTRA;
COMPLETA
DI PERNI E DADI
INOX (AISI 316)
PER FISSAGGIO.

TWO INCLINED COLUMNS BOLLARD

ANODIZED
ALUMINIUM ALLOY
WORKED FROM BAR
AND PLATE;
COMPLETE WITH
FIXING SCREWS
AND BOLTS
IN STAINLESS STEEL.

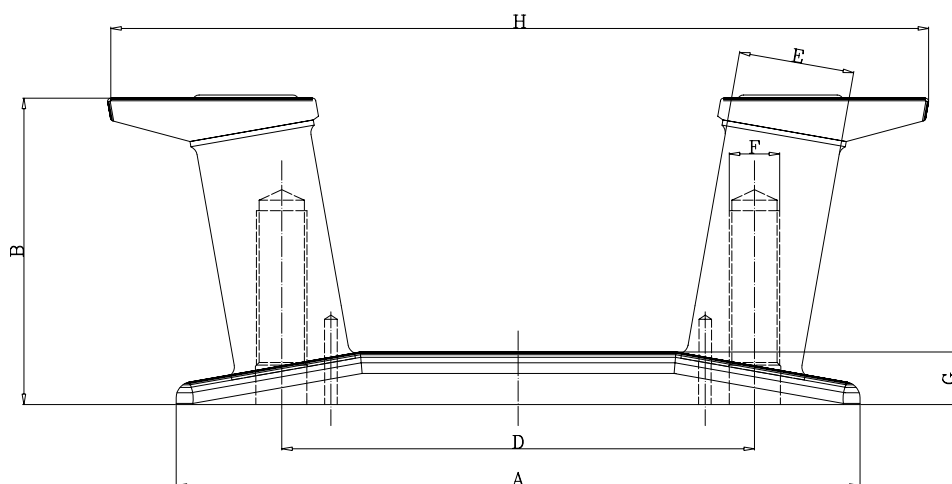


M.Y. FIFTY - CHRISTENSEN

0253-AN
0254-AN

art.

BITTA A DUE COLONNE INCLINATE
TWO INCLINED COLUMNS BOLLARD



ART.	A	B	C	D	E	F	G	H	KG	CARICO DI SICUREZZA SAFE MAX WORKLOAD
0253-AN	650	291	200	450	110	48 M	50	760	45,000	16.000 KG
0254-AN	400	190	120	270	75	30 M	35	484	9,500	10.000 KG