



# STRUTTURA TAVOLO "DOLLY"

art.

0313-AN  
0314-AN



"DOLLY SMALL"

LEGA DI ALLUMINIO  
ANODIZZATO COMPLETO  
DI VITI E POMOLI  
PER FISSAGGIO;  
ALTEZZA REGOLABILE  
MEDIANTE PISTONE A GAS.

ART. 0313-AN:  
IDONEO A SOLLEVARE RIPIANI  
DEL PESO MASSIMO  
DI 13 KG.

ART. 0314-AN:  
IDONEO A SOLLEVARE RIPIANI  
DEL PESO MASSIMO  
DI 16 KG.

A RICHIESTA STRUTTURE  
IDONEE A SOLLEVARE RIPIANI  
DI PESO SUPERIORE.

M.Y. ADMIRAL - CANTIERI NAVALI LAVAGNA



"DOLLY BIG"

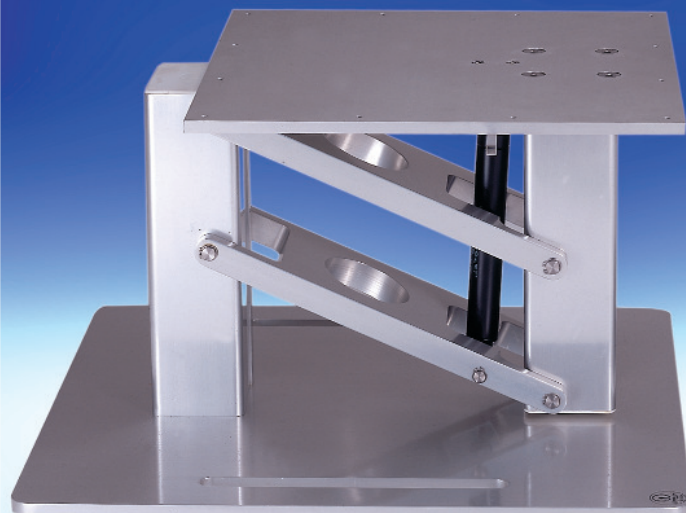
## "DOLLY" TABLE STRUCTURE

ANODIZED ALUMINIUM ALLOY  
COMPLETE WITH  
FIXING SCREWS AND BOLTS.  
ADJUSTABLE HEIGHT  
BY GAS STRUT.

ART. 0313-AN:  
DESIGNED TO LIFT TOPS  
OF 13 KG. OF WEIGHT.

ART. 0314-AN:  
DESIGNED TO LIFT TOPS  
OF 16 KG. OF WEIGHT.

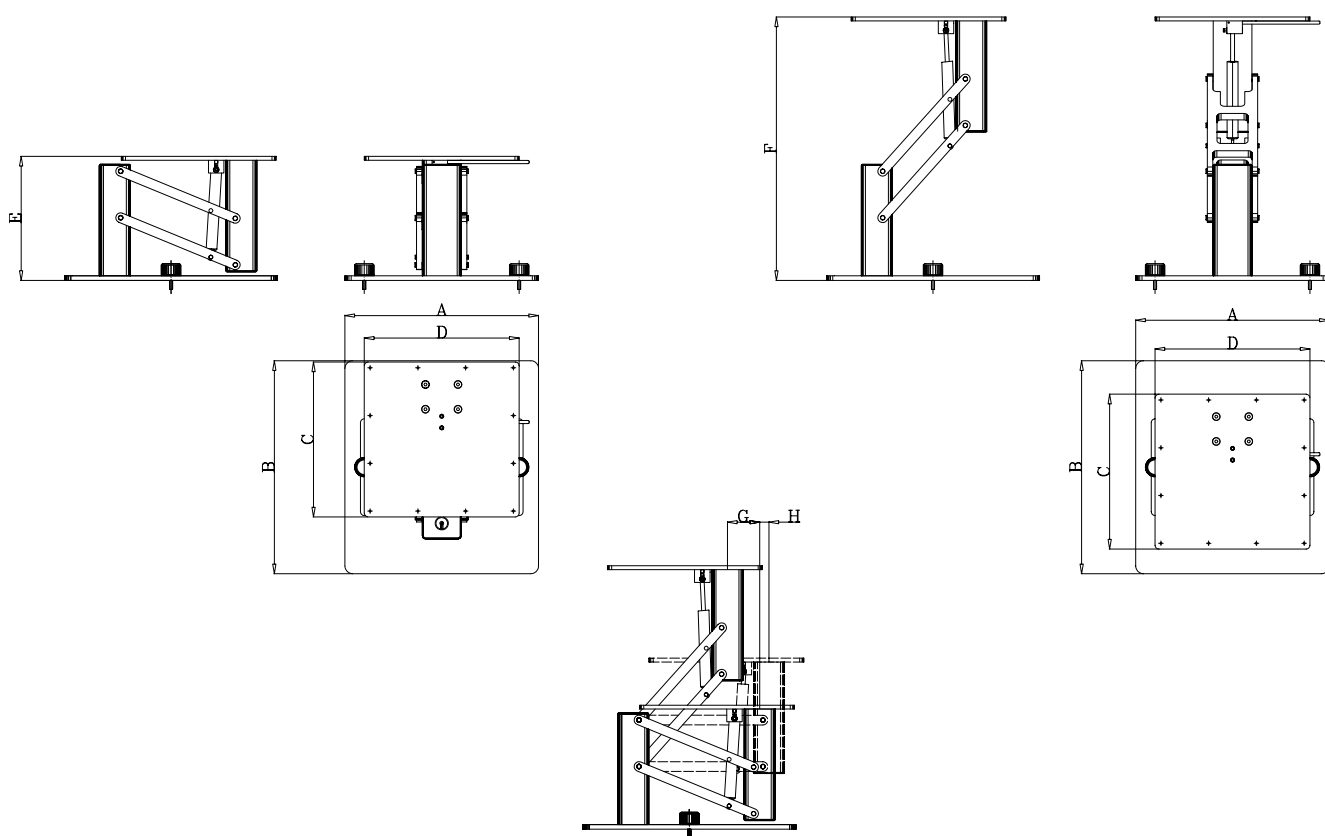
UPON REQUEST TABLES  
AVAILABLE TO LIFT BIGGER TOPS.



0313-AN  
0314-AN

art.

STRUTTURA TAVOLO "DOLLY"  
"DOLLY" STRUCTURE TABLE



ART.	SOLLEVAMENTO LIFTING	A	B	C	D	E	F	G	H	KG
0313-AN	13 KG	320	400	303	359	320	680	83	24	9,600
0314-AN	16 KG	500	550	400	400	320	680	70	28	25,000