



MANIGLIE E MANIGLIETTE

art.

0551-AN
0560-AN
0561-AN
0570-AN
0211-AN
0212-AN



DOOR HANDLES AND KNOBS

ART. 0551: PUSHBUTTON HANDLE

ANODIZED ALUMINIUM ALLOY WITH MILLING FOR SAFETY GRIP.

ART. 0560 - 0561: FURNITURE HANDLET

ANODIZED ALUMINIUM ALLOY WITH MILLING FOR SAFETY GRIP.

ART. 0570: SET (2) OF DOOR HANDLES

ALUMINIUM ALLOY COMPLETE WITH 8 mm STAINLESS STEEL SQUARE AND ALUMINIUM AND NYLON WASHERS.

ART. 0211 - 0212: SET (2) OF ESCUTCHEONS

ANODIZED ALUMINIUM ALLOY TO BE FITTED BY SIMPLE PRESSURE WITHOUT SCREWS.

ART. 0551: MANIGLIETTA A PULSANTE

LEGA DI ALLUMINIO
ANODIZZATA
CON FRESATURA PER
IMPUGNATURA SICURA.

ART. 0560 - 0561: MANIGLIETTA PER MOBILE

LEGA DI ALLUMINIO
ANODIZZATA
CON FRESATURA PER
IMPUGNATURA SICURA.

ART. 0570: COPPIA DI MANIGLIE

LEGA DI ALLUMINIO
COMPLETA DI QUADRO
INOX DA 8 mm
E RONDELLE
IN ALLUMINIO E NYLON.

ART. 0211 - 0212: COPPIA DI BOGCHETTE

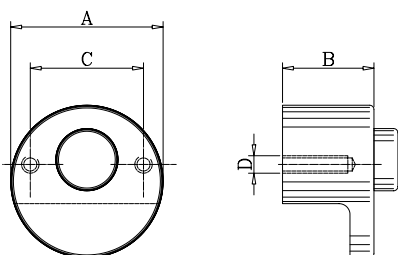
LEGA DI ALLUMINIO
ANODIZZATA, FISSAGGIO
A PRESSIONE SENZA VITI
IN VISTA.



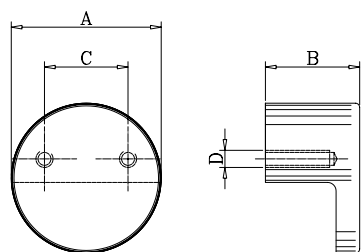
0551-AN
0560-AN
0561-AN
0570-AN
0211-AN
0212-AN

art.

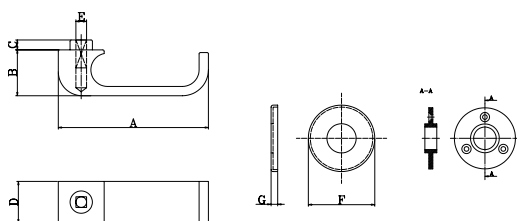
MANIGLIE E MANIGLIETTE
DOOR HANDLES AND KNOBS



ART.	A	B	C	D	KG
0551-AN	35	21	26	4 M	0,040

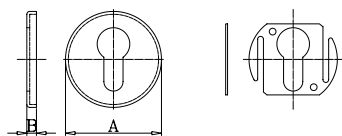


ART.	A	B	C	D	KG
0560-AN	30	20	16	4 M	0,020
0561-AN	35	23	20	4 M	0,035



ART.	A	B	C	D	E	F	G	KG
0570-AN	115	34	7	31	8x8	50	4	0,300

Art. 211 (Gruppo)



ART.	A	B	KG
0211-AN	50	4	0,030
0212-AN	50	4	0,030

Art. 212 (Gruppo)

