

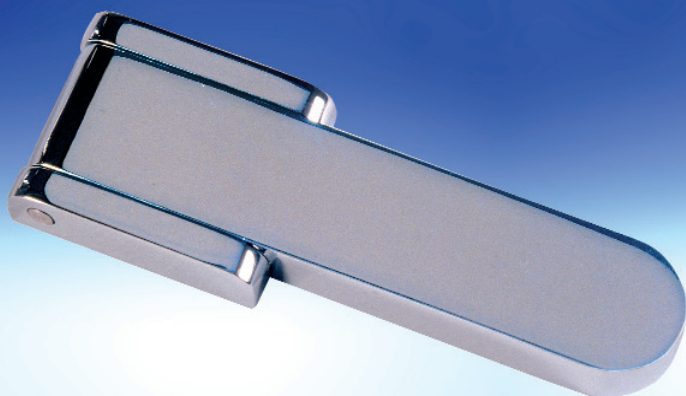


CERNIERE PER BOCCAPORTO

art.

0602-CR
0605-CR
0610-AN

0602



ART. 0602-CR:
OTTONE CROMATO,
CERNIERA A
FISSAGGIO ESTERNO.

ART. 0605-CR:
OTTONE CROMATO,
CERNIERA A
FISSAGGIO ESTERNO.

ART. 0610-AN:
ALLUMINIO
ANODIZZATO,
CERNIERA A
FISSAGGIO ESTERNO.



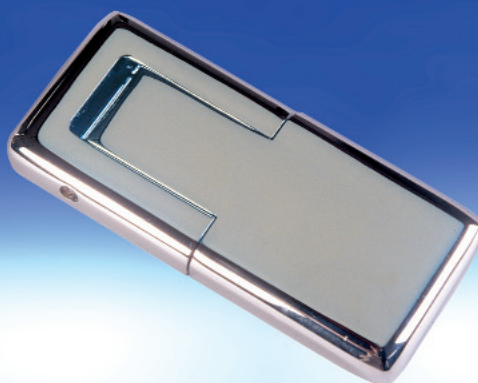
HATCH HINGE

ART. 0602-CR:
CHROMED BRASS;
EXTERNAL CLAMPING HINGE.

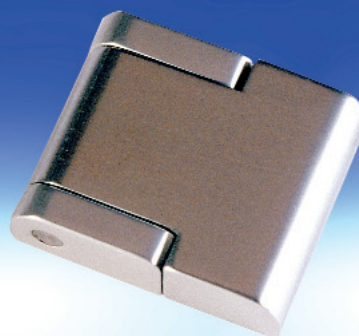
ART. 0605-CR:
CHROMED BRASS;
EXTERNAL CLAMPING HINGE.

ART. 0610-AN:
ANODIZED ALUMINIUM;
EXTERNAL CLAMPING HINGE.

0605



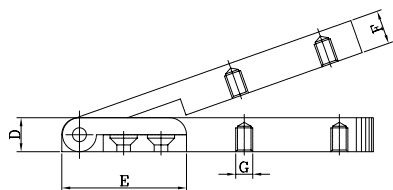
0610



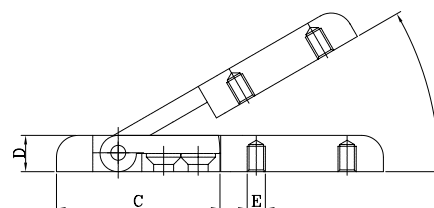
0602-CR
0605-CR
0610-AN

art.

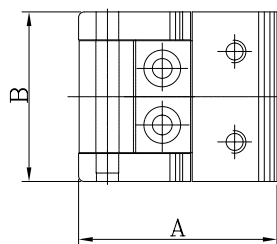
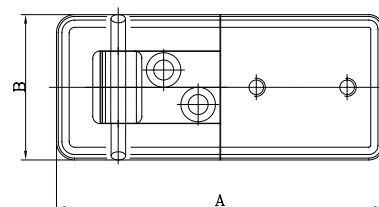
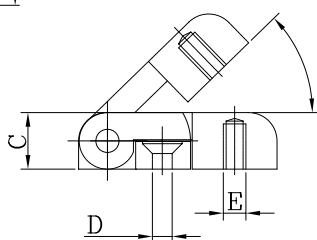
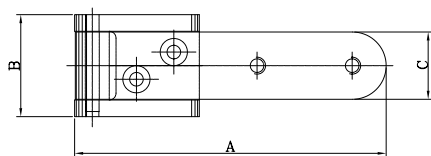
CERNIERE PER BOCCAPORTO
HATCH HINGE



0602-CR



0605-CR



0610-AN

ART.	A	B	C	D	E	F	G	KG
0602-CR	90	30	20	10	37	10	5 M	0,170
0605-CR	90	40	45	10	5 M			0,265
0610-AN	35	30	10	3,5	4 M			0,025